



Sadani®

*Open the
Door of Your
Imagination*



the brands is enough to win the trust....

KVS

PRODUCT CATALOGUE



About us...



SADANI GROUP is among prestigious business group and for over 50 years now, the Group, has been and continues to offer total customer solutions by offering its quality products and services and thus reaching out to thousands satisfied customers not only in India but globally as well.

KVS Hardware & Locks, an associate of Sadani Group, is in this business since over a decade now and is supplying its matchless collection of elegant & high quality brass builder's hardware, Aluminium, Iron, Zinc Hardware & Different type of Locks etc to large number of reputed trader, builder and big dealers of India.

The untiring efforts of our employees and their quest for perfection is the reason behind our ever-increasing popularity in Indian market. Our products are being manufactured in a well-equipped manufacturing unit having the latest and most sophisticated tools.

KVS specializes in both surface finishes-Glossy & Mat and its products come finished in Clear Lacquer, Coloured Lacquer, Satin Brass, Bronze, Antique, Chrome plating, Satin chrome, Brushed chrome, Gold plating, Black Nickel, Satin Nickel, Black Antique, Paint, Powder Coating ,apart of other customer specific finishes.

The Lacquer finish of **KVS** products has been tested & is good for years without any need of additional polish. **KVS** provide lacquer and ELECTROPHORETIC finish on FORGED brass products for long lasting finish.

Our products are hugely appreciated in many parts of India and so we have the large base of loyal customers with us who gives us strength to put further efforts in manufacturing high quality products.

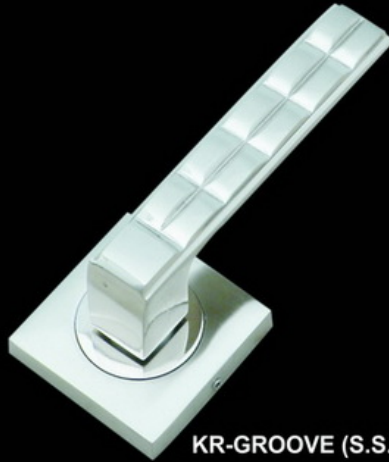
Beyond Business: Reaching out to Society

As a caring corporate citizen, the Sadani Group inherently believes in the trusteeship concept of management. A part of its profits is ploughed into meaningful welfare driven initiatives that make a qualitative difference to the lives of a marginalized people.

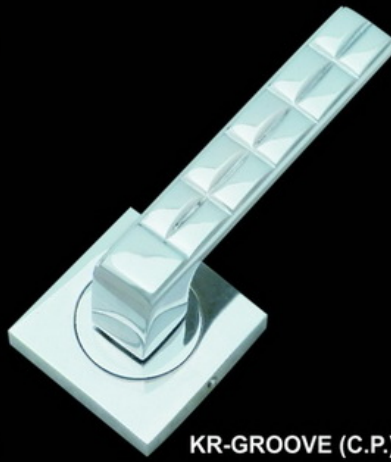
Anchored in a deeply held set of values, the Sadani Group's avowed mission is to add value not only to its customers and employees life but to our society at large as well.



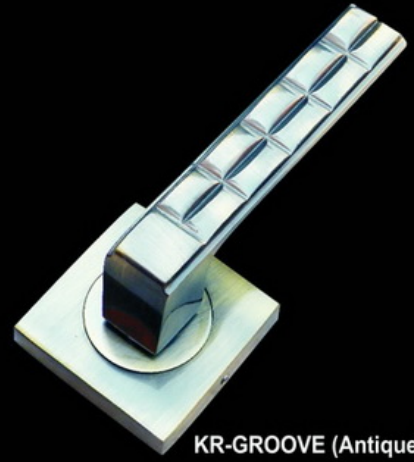
ŠŠ MORTICE ON ROSE



KR-GROOVE (S.S.)



KR-GROOVE (C.P.)



KR-GROOVE (Antique)



KR-GEORGIA



KR-CROWN



KR-BONUS



KR-LINER



KR-LEAF



KR-GOOFY



ŠŠ

MORTICE ON ROSE



KR-1068



KR-1069



KR-1070



KR-SIMBA



KR-ROOTER



KR-GEMINI



KR-MARS



KR-TRIANGLE (1065)



KR-SQUARE



ŠŠ MORTICE ON ROSE



KR-ORCHID



KR-PENTAGON



KR-SLIM



KR-COVET



KR-CONTRA



KR-A9



KR-LEO



KR-ANTARTICA



KR-OCTO



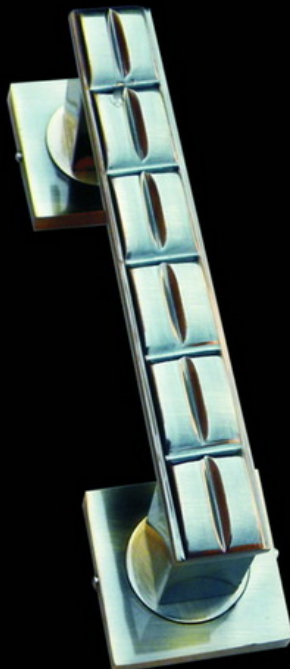
ŠŠ PULL HANDLES



KP-GROOVE (S.S.)



KP-GROOVE (C.P.)



KP-GROOVE (ANTIQUE)



KP-GEORGIA



KP-MUFASA



KP-1066



KP-777



KP-TRIANGLE (1065)



ŠŠ PULL HANDLES



KP-ORCHID



KP-LINER



KP-ANTARTICA



KP-DESIRE



KP-1000



KP-1068



KP-1069



KP-ROOTER



ŠŠ

PULL HANDLES



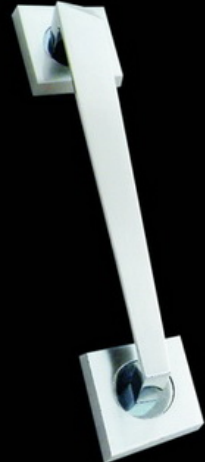
KP-BREEZ



KP-TWILIGHT



KP-SOPHIA



KP-XING



KP-PRINGLE



KP-LINIA



KP-COBRA



KP-ARROW



KP-011



KP-A2



KP-A3



KP-A4



ŠŠ

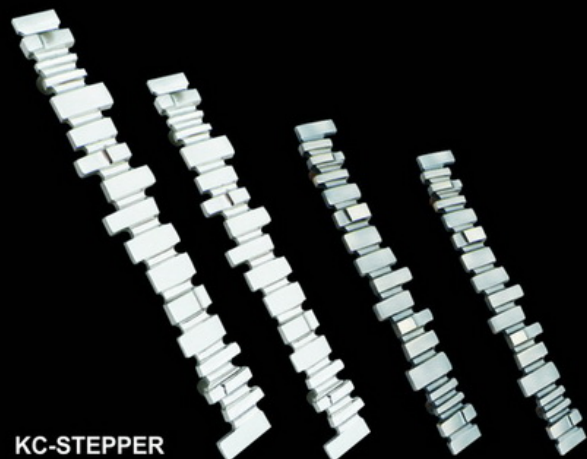
CABINET HANDLES



KC-FLOWER



KC-LEAF



KC-STEPPER



KC-CROWN



KC-FENCE



KC-TREE

AVAILABLE IN 96mm, 160mm, 224mm, 288mm



ŠŠ CABINET HANDLES



KC-A1

KC-A1 (PLUS)

KC-COASTER

KC-A3



KC-A4

KC-A8

KC-A9

KC-SQUARE

AVAILABLE IN 4", 6", 8", 10", 12"



ALDROPS



KAL-CROWN



KAL-SOPHIA



KAL-MARVEL



KAL-LEAF



KAL-722



KAL-WAVE



KAL-SPLASH



ŠŠ MORTICE HANDLES



KML-101



KML-102



KML-103



KML-104



KML-105



KML-106



KML-107



KML-108



KML-109



KML-110



ŠŠ MORTICE HANDLES



KM-MUFASA



KM-A-1



KM-SQUARE



KM-SQUASH



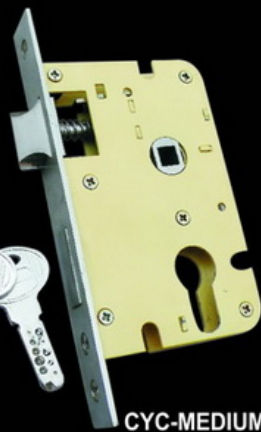
KM-WAVE



KM-CURVE



CYC-BIG (S.S.)



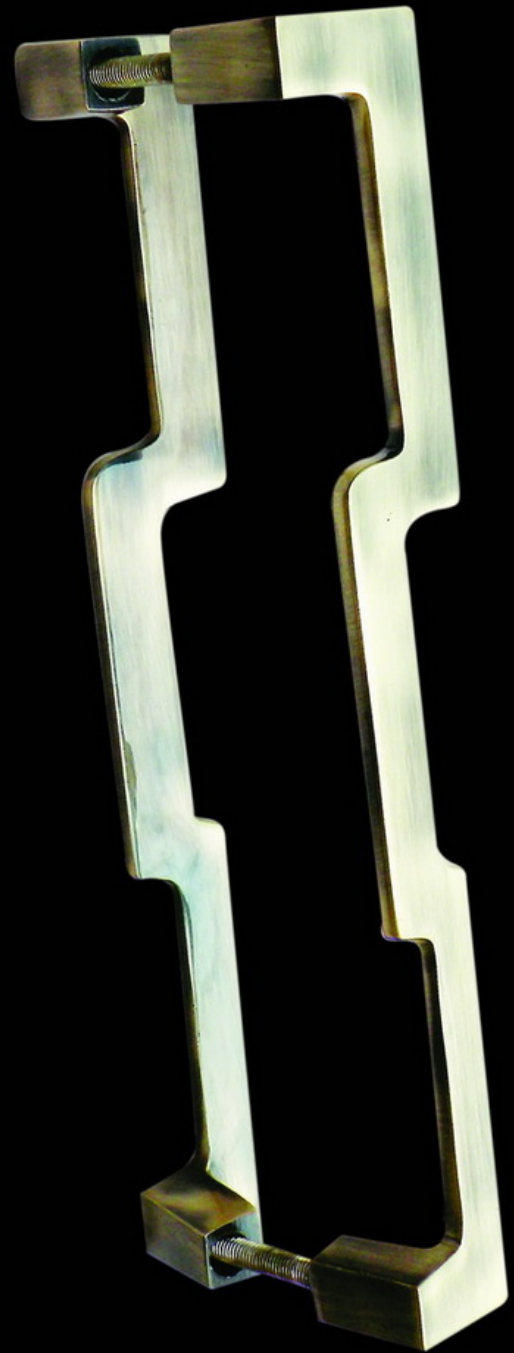
CYC-MEDIUM



KM-GAWA



Brass Glass Door Handle



AVAILABLE IN 200mm & 250mm



About Our Quality

LACQUER ON SAND-CASTED BRASS BUILDERS HARDWARE BRASS in its polished state and in contact with water and air began to tarnish and appears dull finish and black. By applying lacquer and baking at a temperature helps to make the life of finish durable. In **Sadani Overseas** we make special precautions for putting a good finish and lacquered piece. No pit holes or rashes are allowed to pass from the expert eyes of the personals specially appointed to see the finish at all stages of manufacturing.

FINISHES ON BRASS:

Black Nickel, Satin Chrome, Satin Silver, Silk Gold etc and Antique Finish are the main finish will are very popular in market. We have our well-established plant for providing the best finish on the items.

ELECTROPHORETIC LACQUERING Only on Forged Door Handles:

ELECTROPHORETIC Lacquering is a Cathodically **Electrodeposited (ED) Polymer system**, which offers long life finishes & stability besides superior chemical resistance, Fade resistance, Bright Coatings, excellent hardness Ultra Violet and Improved product life. The main benefit of cathodic process is that it does not attack on Metal. Operation's essential requirement of Dust Free Environment is followed and the Deposition Characteristics at 15 - 25 Microns Film Thickness are described as follows:

Above all, freedom for coating from **5 to 25 Microns** as per requirement of the customer. While producing handle plates of a mortise lock, we ensure that it fits very well into the interior decor of the house and it should have no adverse effect of hand rubbing, wet handling and corrosive atmosphere etc.

It offers Innovative Finishes such as **Gold, Silver, Black and Silk Gold and its selective combination** add to the appearance of the Product. Company has introduced various new Models utilizing the combination of finishes and the same have got encouraging trade response.

LOCKS

There are two types of mechanism for production of Locks i.e. **Lever Mechanism and Pin Cylinder Mechanism**. The quality of Locks is directly related to the material selected for different parts and clearance between the Gate and the Needle. Moreover smooth surfaces of Lever and its uniform thickness; Accuracy of Key slot and hard drawn springs of recommended chemical composition play an important role in the excellent quality of Locks.

Keeping it in mind, we use the material as recommended in various specifications of **Bureau of Indian Standards as well as International standards**. To make the Locks most reliable security system, every lock Is tested for Soundness, Load and Non- interchangeability in our Testing Laboratory as prescribed in IS standards.



KVS HARDWARE & LOCKS

H.O.: Sadani Complex, Madar Gate,
Aligarh-202 001 (INDIA)

Tel / Fax : +91-571-2405481, 2402321, 2406861

e-mail : kvshardware@hotmail.com

e-mail : csadani07@hotmail.com

Factory & Warehouse:

4 km. Milestone, Agra Road,
Aligarh-202 001 (INDIA)

Tel / Fax : +91-571-2410859, 2410858